

T. MABRY CARLTON, JR. MEMORIAL RESERVE

1800 Mabry Carlton Parkway, Venice | Park Hours: 6 a.m. to Sunset



WELCOME!

T. Mabry Carlton, Jr. Memorial Reserve (Carlton Reserve) is comprised of 24,565 acres of numerous freshwater wetlands, pine flatwoods, dry prairies and shady oak hammocks. Purchased in 1984, the reserve is the source

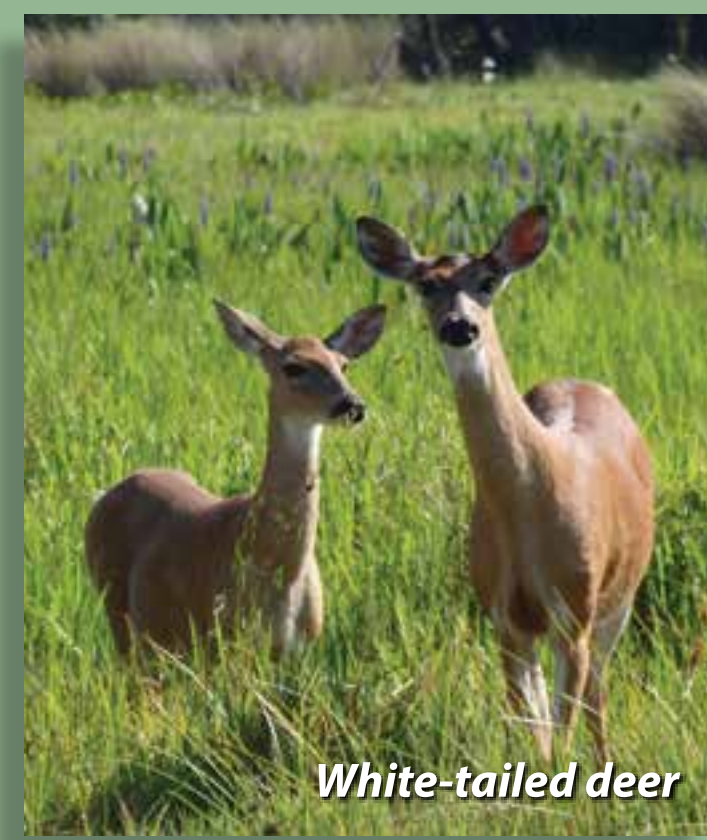
of Sarasota County's largest well field, supplying a substantial portion of our drinking water. It also provides unique wilderness recreation opportunities like birdwatching, trail running, geocaching, orienteering, as well as habitat conservation and cultural heritage preservation.



The wild and scenic Myakka River meanders for six miles on the west boundary and Myakka River State Park borders the north side of the reserve. Bring your canoe or kayak to the Border Road canoe/kayak launch and spend the day on the river.

THE WILD SIDE

As you explore the reserve, discover some of Florida's natural beauty and wonder. Commonly seen wildlife includes sandhill cranes, white-tailed deer, wild turkey, bobcats, alligators, swallow-tailed kites, bluebirds and an assortment of wildflowers, such as butterfly orchids, pine lilies and the delicate blue flag iris.



FACILITIES

From this parking lot, visitors have easy access to the equestrian trailer parking lot, which connects to the Myakka Island Wilderness Trail. There's also interpretive self-guided

nature trails, picnic tables, visitor's cabin, large reservable picnic pavilion, sustainable composting restroom and seasonal primitive camping. Hiking the backcountry gives you access to more than 100 miles of trails and 70,000 acres of contiguous protected natural land.



HIKING, BIKING AND EQUESTRIAN TRAILS

You are just a few steps away from several hiking trails ranging from a less than 1-mile loop to the BoldlyGo Trail, a challenging 9.1-mile, single-track loop built and maintained by county volunteers for biking and hiking. (Follow the signs.)

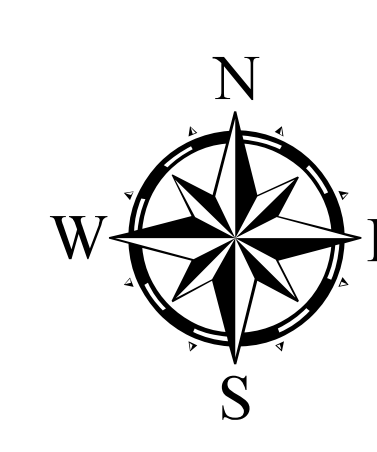
The backcountry offers more than 100 miles of marked, unpaved multi-use trails including the 12-mile Myakka Island Wilderness Trail, which connects with Myakka River State Park. These primitive trails provide visitors with the opportunity to explore natural Florida at its finest through hiking, off-road biking and horseback riding. (See map on back.)

NATURE/BIKE TRAILS

- Yellow Trail (.8 miles)
- Orange Trail (.8 miles)
- Green Trail (2.1 miles)
- Red Trail (3 miles)
- BoldlyGo Bike Trail (9.1 miles)



Bicycling	Hiking	Restrooms	Trail - Unpaved
Boundary	Kiosk	Road - Paved	Trail marker
Camping - Primitive	Parking	Road - Unpaved	
Entrance	Pavilion	Trail - Equestrian	



YOU ARE HERE LAT: 27.128042°N
LONG: 82.333600°W

0 250 500 1,000 Feet
0 0.05 0.1 0.2 Miles

Sarasota County prohibits discrimination in all services, programs and activities. View the complete policy at scgov.net/ADA.
This map is produced from Sarasota County GIS, and is representative information only. This County does not warrant, guarantee, or assume any responsibility for geographic information completeness and/or accuracy. This map should not be used as a guide for navigation. Copyright © SCGIS 2018.

cowboy camp history

Although most of the original buildings are now gone, a collection of exact replicas mark the historic Windy Sawgrass Cow Camp, which is where cow hunters once camped and gathered cattle from the open prairies and swamps. The cowboy camp is now a destination for horseback riders and hikers to camp in the old bunkhouse and stable their horses in the 12-stall rustic barn.

FOR YOUR SAFETY AND THE PROTECTION OF THE PRESERVES

- This preserve is open from 6 a.m. to sunset.
- Please leave all natural features, plants and animals undisturbed.
- Pack it in, pack it out. Please do not litter.
- Please take valuables with you and lock your vehicle.
- Sarasota Sheriff's Office Non-Emergency: 941-316-1201
- Pavilion and primitive camping reservations: 941-861-5000

SOARING ABOVE THE HAMMOCK

The swallow-tailed kite is unmistakable in flight, with long, pointed wings and a deeply forked tail. This graceful bird rarely flaps its wings while flying but almost continuously moves its tail, sometimes to nearly 90 degrees, enabling the bird to maintain a flight path, make sharp turns or circle treetops.



LIFE ON THE WING

- Once they learn to fly, kites spend more than 80 percent of their lives in the air.
- Dragonflies and cicadas are their main food, but they also eat snakes, lizards and treetop nestlings.
- Kites nest and roost communally, especially right before migration, and can be found in groups of hundreds.

TAKE A PHOTO OF THIS SIGN
as a safety and informational reference!